

MEEKER MIDDLE SCHOOL

12600 SE 192nd St.
Renton, WA 98058
Phone: (253) 373-7284
Fax: (253) 373-7560



Dr. Breanne Devlin, Principal
Michael Cohen, Assistant Principal

SEPTEMBER 2023

Academic Day 8:15 a.m. – 2:55 p.m.
Wednesday 8:15 a.m. – 12:55 p.m.
Office Phone 7:30 a.m. – 4 p.m.

<http://www.kent.k12.wa.us/MK>

Hello Meeker Families,

Welcome back to school! We were so excited to see students on campus and begin our journey together. We are spending time teaching expectations and reviewing content. Meeker students are doing an amazing job following the expectations and showing their pioneer pride. I-Ready testing was successful. Students were ready to perform their best. For students who did not complete or were absent, we will be making sure they have time to complete the test but with so many students who completed the test in the two days, we will not be testing on Wednesday September 13th as an entire school. We are so proud of Meeker students!

We would like to thank the families that are traveling on campus during dismissal and forming 2 lines down each parkway. For student safety, do not pick up students until you are in the parkway. Please do not block the school entrance or 192nd Street.

We look forward to seeing you at our Meeker Open House on Thursday, September 21, 2023 from 6–8 p.m., followed by an optional Skyward sessions until 8:30 p.m.

Thank you for sharing your student with us.

Bree Devlin
Meeker Principal

SEPTEMBER

- 21 Meeker Open House 6–8 PM
(More information to come)
- 21 Skyward Info Session 8:30 PM
- 26 PTSA Meeting @ 6:30 PM

OCTOBER

6 NO SCHOOL

- Teacher Workshop Day
- 13 School Picture Retake Day
(for students absent on 9/5)
- 18 Academic Support Begins
- 26 Quarter 1 Ends
- 26 After-School All-Stars Begins

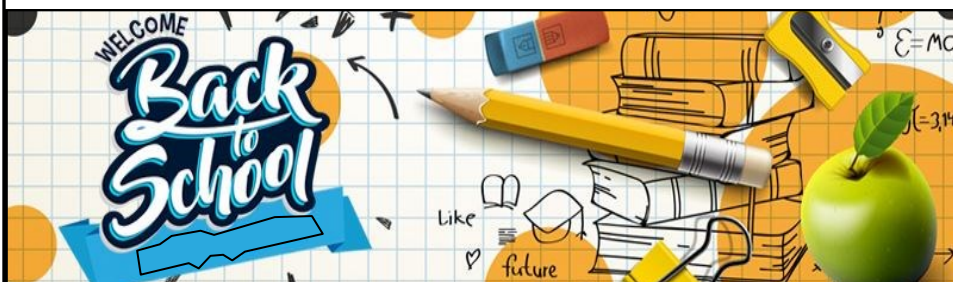
NEED TO REPORT AN ABSENCE?

Phone Meeker Attendance:
253-373-7284

Email Attendance:
MKAttendance@kent.k12.wa.us

Skyward Attendance: Enter info on the Attendance Tab on the right side of your Family Access window

Use the KSD App:
Download the free App





ATHLETICS AND ACTIVITIES

All sports practices are immediately after school from 3:00–5:00 p.m. on non-game days.
The activity bus home is available to students on practice days. **NO PRACTICES WEDNESDAYS.**

Track

Meets start at 3:30 PM

Head Coach: [Melissa Stanley](#)

Coaches: [Rey Ramirez](#)

[Natalie Ehle](#)

[Jamie Barney](#)

Date	Opponent	Location	
Thu, Sep 14	Canyon Ridge/Cedar Heights	@	Meeker
Tue, Sep 19	Mattson/Meridian	@	Mattson
Tue, Sep 26	Mill Creek/Northwood	@	French Field
Tue, Oct 3	Maple View/Summit Trail	@	Maple View
Tue, Oct 10	Meridian/Northwood	@	Northwood
Wed, Oct 18	District Finals	@	French Field

Boys Soccer

Varsity games start 3:30 PM

JV games start approx. 4:45 PM

Coaches: [Andy McCorquodale](#)

[Jasmine Ernest](#)

Date	Opponent	Location	
Fri, Sep 15	Northwood Both games at 3:30 PM	@	Petrovitsky Park Varsity - Field 1 JV - Field 2
Fri, Sep 22	Cedar Heights	@	Meeker
Mon, Sep 25	Meridian	@	Meridian
Fri, Sep 29	Canyon Ridge	@	Meeker
Mon, Oct 2	Mill Creek	@	Hogan Park
Mon, Oct 9	Mattson	@	Meeker
TBD	Playoffs	@	TBD

Girls Badminton

Varsity games start at 3:30 PM

Coaches: [Todd Ehle](#)

[Donald Hall](#)

Date	Opponent	Location	
Tue, Sep 12	Summit Trail	@	Summit Trail
Thu, Sep 14	Meridian	@	Meeker
Tue, Sep 19	Maple View	@	Maple View
Tue, Sep 26	Cedar Heights	@	Meeker
Thu, Sep 28	Canyon Ridge	@	Canyon Ridge
Tue, Oct 3	Mill Creek	@	Meeker
Thu, Oct 10	Mattson	@	Meeker
Tues, Oct 17	Playoffs	@	Mattson
Thu, Oct 19	Playoffs	@	Maple View



PIONEER PRIDE

We Set the BAR High

Be Safe — Act Responsibly — Respect Others

Independent Learner Checklist

Independent learner habits are the key to success in middle school. When students take ownership of their learning and behavior on a regular basis, they by and large succeed in their classes.

Periodically ask your child which of these statements better describe how they normally behave in school. Encourage them to work towards the “independent learner” column.

	Dependent Learner	Independent Learner
Materials	Often comes to school without required materials (pencils, notebooks, computer, etc.).	Always (or almost always) comes to school with required materials (pencils, notebooks, computer, etc.).
Grades	Does not regularly check their own grades. Waits for others (parent, teacher) to tell them how they are doing.	Regularly checks their own grades. Does not wait for others (parent, teacher) to tell them how they are doing.
Getting help	Waits for teacher or other students to notice they are struggling. Waits for others to offer help. Doesn't ask many questions about course content.	Doesn't wait for teacher or other students to notice they are struggling. Ask for help when they need it. Asks frequent questions about course content.
Absences	Does not enquire about what they missed or what they need to do after an absence.	Knows where to look and/or asks teachers to find out what they need to do after an absence (or beforehand if the absence was planned).
Homework	Often doesn't do homework if nobody reminds them to do it.	Does homework even if nobody reminds them to do it.
Behavior	Relies on others to remind them of acceptable school behaviors.	Remembers acceptable behaviors and follows them.

Meeker Behavior and Expectations

As we begin the school year, we'd like to remind students and families of the behavior expectations at Meeker. Each month we will highlight an area of expectations.

This month we are featuring **Classroom Expectations**.

Please review these with your student so they know what is expected of them and they can have a successful year.

CLASSROOM EXPECTATIONS

BE SAFE	ACT RESPONSIBLY	RESPECT OTHERS
<ul style="list-style-type: none"> ■ Keep hands and feet to yourself ■ Safe behavior always ■ Follow the teacher's expectations & procedures 	<ul style="list-style-type: none"> ■ Class starts at the bell—be in your seat, ready to learn ■ Bring all required materials ■ Put cell phones, earbuds, and other personal electronic devices away ■ Use KSD devices as directed ■ Choose to be a part of class ■ Bring your charged computer every day 	<ul style="list-style-type: none"> ■ Level 0-2 voice ■ Use respectful language ■ Demonstrate manners ■ Keep surfaces clean and respect school property ■ Be a contributor, not a distraction ■ Ask before touching others' property



Illness and Attendance

When to Keep Students Home from School

- Covid
- Bad cold
- Chicken Pox
- Conjunctivitis (Pink Eye)
- Drainage from ears or eyes
- Fever of 100° Fahrenheit or greater within the last 24 hours
- Frequent, hard coughing
- Head lice
- Loose, watery bowel movements
- Vomiting

When to Return Students to School After Illness

- No temperature (over 100°) for 24 hours without fever-reducing medication.
- Student feels well enough to be in school for the full day.
- No vomiting or loose stools for at least a day.



For more details on School Nurse Services, please see the [Health page](#) of the KSD website.

KSD takes guidance from the Washington State Department of Health and/or King County Public Health Department.

Meeker CTE (Career and Technical Education)

Hello families!

Many of you may be surprised to learn there is a resource dedicated to career and college support at the middle school level. Middle school is an optimal time for career exploration, as students are engaging in teamwork, self-exploration and development of future goals. My role as a Career Specialist is to provide opportunities for students to learn about careers, think about their individual skills/interests/abilities, and begin planning for possible post-high school paths.

We'll be doing several activities this year with this goal in mind. There will be workshops, guest speakers, lunchtime learning opportunities and more. All will be optional, so please encourage your student to read their emails, watch for fliers, and visit me to learn more. I can be found in my office in the counseling wing on Thursdays, Fridays and every other Wednesday (I split my time with another middle school).

I am also available to you as a resource as we work in partnership to support your student. Please feel free to contact me if you have questions, concerns or are willing to be a guest speaker to share about your career. I can be reached at jennifer.wu@kent.k12.wa.us or (253) 372-0348. I find joy in helping people discover meaningful ways to use their skills and talents in a job or career, and I look forward to supporting Meeker again this year!

Jen Wu
Career Specialist





MEEKER NEWS

Academic Support

Academic Support is a voluntary program for students. ***Any student may attend academic support.*** The program will begin Monday, September 18.

Weekly Academic Support

- Monday, Tuesday, and Thursday from 3–5:15 pm in the Meeker library
- Transportation home is provided for eligible students.

Saturday Academic Support

- On designated Saturdays (TBD) from 9 am–noon in the Meeker Library
- Transportation is **not** provided.



Both academic support options allow students to have a quiet space and receive help to complete their assignments. Please email teachers jessica.pringle@kent.k12.wa.us or nicolette.schuster@kent.k12.wa.us if you would like your student to attend after school or Saturday, or with any questions about the program.

Counselors

This school year is well underway! If you have questions or concerns regarding your student's academic, social, or emotional needs, please contact your the counselor.

6th Grade Counselor – Ms. Samina

(253) 373-7289

Samina.Shafi@kent.k12.wa.us

7th Grade Counselor – Ms. Sara

(253) 373-7106

Sara.Taferre@kent.k12.wa.us

8th Grade Counselor – Mrs. White

(253) 373-6385

Reminders for Families

- **Student ID Cards** — ID cards were issued to students on picture day. Any student who has their photo taken on picture retake day (10/13) will receive their ID card that day. ID cards are required for student entry into athletic events. Replacements cards can be purchased at the Cashier window for \$5.
- **Bus Passes** — Student ID cards are used as bus passes. Bus drivers will require that students show their ID card as they enter the buses. Any students who have not yet received their ID card, or who forgot their ID card, can get a copy of their bus pass during lunch from the main office.
- **Breakfast/Lunch** — Meals (not including a la cart items) will be served free to all students regardless of free and reduced status. Breakfast is served from 7:45–8:10 a.m. in the cafeteria.
- **Early Dismissals**— If you need to pick up your student before the end of the school day, please come to the main office to sign out your student. Have your ID available and ready.



KENT SCHOOL DISTRICT
EQUITY | EXCELLENCE | COMMUNITY

Kent School District does not discriminate in admission, access, treatment, or employment on the basis of sex, race, creed, religion, color, national origin, age, honorably discharged veteran or military status, sexual orientation including gender expression or identity, the presence of any sensory, mental or physical disability, or the use of trained dog guide or service animal by a person with a disability. Student, school district employees, parents/guardians, and community members will not be excluded from participation in or be subjected to discrimination with respect to any educational program or activity. If you have any questions, please contact one of the following: Our Title IX Office at 253-373-7203, or our Title IX and State Law Compliance Coordinator and Section 504/ADA Coordinator, Randall Heath, Executive Director, Student and Family Support Services. He can be reached at 253-373-7081, by email at randall.heath@kent.k12.wa.us, or via mail at 12033 SE 256th St. Kent, WA. 98030. Kent School District will also take steps to assure that national origin persons who lack English language skills can participate in all education programs, services and activities. For information regarding translation services or bilingual education, contact Student and Family Support Services at 253-373-7269. Further, the District complies with all requirements and objectives of applicable state and federal laws.